



Bio-Therapeutic
TECHNOLOGY ACCELERATED SKIN CARE™



bt-micro® FUSION PRO EXFOLIATION SYSTEM

OPERATION MANUAL

INTERNATIONAL EDITION

MODEL MF-69-PRO

CONTENTS

Welcome	1
Intended Use	2
Contraindications	2
Unit Specifications	3
Maintenance	3
Cleaning and Disinfecting	4
Unit Diagram	5-6
How to Charge	7
Using the Stand	8
Controls	9
Operation	10
Application	11
Troubleshooting	12
Important Safety Precautions	12
Disposal	15
Environmental Conditions	15
Definitions of Symbols	16
Warranty	16

Congratulations on your purchase of the bt-micro fusion PRO. Your equipment has been built with the highest quality components for lasting precision and operating durability.

IMPORTANT: Read all instructions before use, save these instructions for future reference

INTENDED USE

The bt-micro fusion PRO is used to

- Exfoliate the skin
- Give skin a smoother, luminous look and feel
- Offer overall improvement in the appearance of skin

The bt-micro fusion PRO does not penetrate the living layers of the skin, and is not intended for use in the diagnosis of disease or other conditions, or in the cure, mitigation, treatment, or prevention of disease, and is not intended to affect the structure or any function of the human body.

CONTRAINDICATIONS

- Pacemaker or other implanted electronic devices
- Cancer
- Open wounds, sores, lesions, or irritated, damaged, infected skin
- Pregnancy or nursing
- Any contagious or transmittable diseases
- Hemophilia or other bleeding disorders
- Taking blood disorder medications
- Currently taking drugs with the ingredient isotretinoin

Consult a physician before using if there are any health or medical concerns.

DO NOT use the bt-micro fusion PRO if any contraindication is present.

UNIT SPECIFICATIONS

Weight: 113g (4oz)

Dimensions: 145mm (5.7")h x 46mm (1.8")w x 19mm (.75")d

3 Modes: EXFOL, CLEAR, APPLY

2 Power Levels: HIGH (+), LOW (-)

Body Material: Zinc Alloy, ABS plastic

Applicator: Medical grade stainless steel

Water Resistant: IP35

Power: Rechargeable battery pack, USB, or A/C outlet

Charger Input Voltage: 100-240 V, 0.2A---AC 100-240V

Charger Output Voltage: 5V, 0.2A---DC5V, 1A

Power Supply: 3.7 V, 1.2A---3.7V, 600mAh

MAINTENANCE

- Store the unit with power off.
- Store in a clean, dry environment.
- Store away from direct sunlight, high temperatures, and humidity.
- Store with the applicator cover on to protect from damage.
- Inspect the unit before each use for damage and proper functionality.
- The expected service life of the bt-micro fusion PRO, internal power source, and parts and accessories is 2-3 years. No maintenance is required under normal conditions of use.
- Contact the manufacturer or your sales representative with any questions regarding use, performance / unexpected performance, or repair of equipment.



WARNING: Do not repair or maintenance the unit during operation

CLEANING AND DISINFECTING

Wipe the entire bt-micro fusion PRO unit and charger after each use with EPA registered medical grade disinfectant wipes.



IMPORTANT: Do not submerge or rinse the bt-micro fusion PRO under water or allow any liquid to stand on or enter the unit, this will damage the unit.

UNIT DIAGRAM

1. bt-micro fusion PRO
2. Controls
3. Applicator
4. Charging port (on back of unit)
5. Pink silicone carrying case
6. A/C adapter (varies by market)
7. Charging cord
8. Equipment Stand
9. Fabric sleeve with drawstring
10. Applicator cover



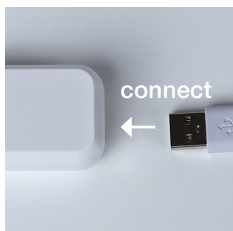


IMPORTANT: Do not remove serial number sticker from the unit.

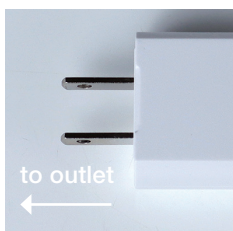
HOW TO CHARGE



Pull back charging port cover and plug round end of charging cord into the back of the unit. You will feel the magnet engage when cord is secure.



Plug the charging cord into AC adapter.



Plug AC adapter into standard wall outlet.

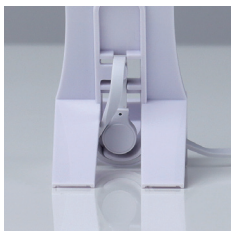


The mode LED lights cycle on and off from left to right while the unit is charging. All 3 LED's will turn on solid when charging is complete.

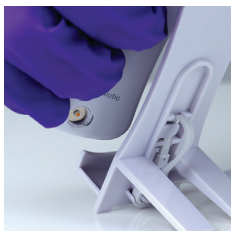
The bt-micro fusion PRO will not operate while charging.

USING THE STAND

Use the equipment stand to store the unit on your work surface or countertop.



Guide the charging cord through the channels on the back of the equipment stand.



Pull back charging port cover and slide the unit onto the stand from the side. You will hear the magnetic connection click when engaged.



Set the unit onto the stand



You may also use the stand without using the charging cord.

CONTROLS

APPLICATOR

Keep cover on applicator when not in use.

MODE INDICATOR

An LED above the mode lights up blue to indicate active mode.

HIGH / LOW BUTTON

Press to cycle through HIGH and LOW options. Mode starts on LOW by default.

MODE BUTTON

Press to cycle through the 3 modes: EXFOL, CLEAR, and APPLY.

POWER BUTTON

Press and hold until the unit turns on or off.



OPERATION

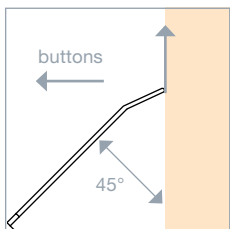
1. Turn the unit on by pressing and holding the **Power Button** until the unit turns on.
2. Press **MODE** to select mode, **EXFOL** is active by default.
3. Press **+/-** to start mode in **LOW**. Press **+/-** to cycle between **HIGH** and **LOW**.
4. Turn the unit off by pressing and holding the **Power Button** until the unit turns off.

NOTE: To conserve battery power the unit is designed with an auto shut off feature. If the unit turns off during a service simply turn it back on and resume your service.



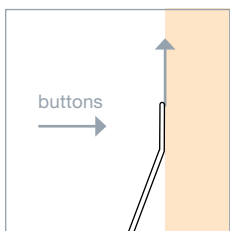
APPLICATION

The bt-micro fusion PRO has 3 modes. Active mode is indicated by the LED light above the mode name. The LED light will shine dim in LOW and bright in HIGH.



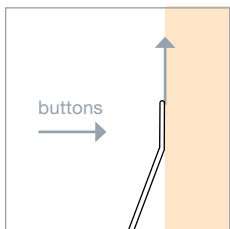
MODE: EXFOL

Apply exfoliating product of choice. Hold the bt-micro fusion PRO at a 45 degree angle with the buttons facing outward. Gently smooth with upward motions. Periodically wipe away any debris from the applicator.



MODE: CLEAR

Apply deep cleansing product of choice. Hold the bt-micro fusion PRO with buttons facing inward and the applicator flat against skin. Gently smooth with upward motions.



MODE: APPLY

Apply serum, cream, or ampoule of choice. Hold the bt-micro fusion PRO with buttons facing inward and the applicator flat against skin. Gently smooth with upward motions.

TROUBLESHOOTING

ISSUE	CAUSE	SOLUTION
No Power	<ul style="list-style-type: none">• Faulty charging Cord• Faulty A/C Power Supply• Battery power drained	<ul style="list-style-type: none">• Replace charging Cord• Use functioning A/C power supply• Charge Battery
Unit not operational	<ul style="list-style-type: none">• No power• Not power related	<ul style="list-style-type: none">• See solutions for No Power above• Contact manufacturer

IMPORTANT SAFETY PRECAUTIONS



DANGER:

1. To reduce the risk of electrocution, do not use the bt-micro fusion PRO in or near water. Not for use in the bathtub or shower.
2. To reduce the risk of electrocution, do not reach for a charging bt-micro fusion that has fallen into water. Unplug immediately.
3. Power cords pose a strangulation risk, keep out of reach of children.

WARNING:

1. Not for use by or on children. Small parts may be swallowed or inhaled by children or pets.
2. Application near the thorax may increase the risk of cardiac fibrillation.
3. Do not apply across or through the head, directly on the eyes, covering the mouth, on the front of the neck (especially the carotid artery), on the chest or upper back, or over the heart.
4. Do not use on an individual who is connected to high frequency surgical equipment as burns or other injury could occur. Damage could occur to the equipment.
5. Operate the unit in an area with appropriate space for standard applications, and with room to operate all functions freely, including powering the unit off.
6. Use only as described in this manual. Do not use attachments, accessories, or parts not supplied by the manufacturer.

**WARNING CONTINUED:**

7. Do not modify the equipment in any way, and do not open the unit. There are no serviceable parts.
8. Unauthorized modification or repair of the bt-micro fusion PRO, including the use of non-original supplied parts, accessories, or batteries can lead to injury, damage, failure, and degradation of equipment performance.
9. Do not plug the product into an outlet with voltage other than specified on the charger.
10. Do not operate if any portion of the bt-micro fusion PRO is damaged in any way.
11. Do not immerse in liquid. Do not rinse or submerge under water or allow any liquids to enter the unit at any time.
12. Keep charging cord and unit away from heated surfaces.
13. Replace charging cord immediately if damaged in any way or dropped in water.
14. Do not use if under the influence of alcohol, or drowsy.
15. Do not use if there are allergies to zinc alloy, ABS plastic, or stainless steel.
16. Skin irritation could occur with prolonged exposure to the metal applicator
17. Do not use under or near steam.
18. Stop using the unit immediately if the button overlay cover is cracked or has failed. Continuing to use the unit will cause fluids to access the internal electronics and cause failure.
19. Exposing the unit to dust, lint, or debris could affect the internal workings of the bt-micro fusion PRO.
20. When the unit has multiple users, the unit must be cleaned by wiping with 75% alcohol and a dry cloth before use. When the unit is not in use, store in a dry and well ventilated environment.
21. Check the integrity of the unit before each use. Do not use if there is wear and tear, damage to the applicator, missing parts, or the unit does not turn on and off normally.
22. Patients with implanted electronic devices (pacemakers, etc.) should use the unit only with the advice of their physician.

This unit complies with Part 15 of the FCC Rules. Operation is subject to the following two conditions:

- (1) this unit may not cause harmful interference, and
- (2) this unit must accept any interference received, including interference that may cause undesired operation.

- For your safety from electrical shock, the bt-micro fusion PRO should not be opened or disassembled for troubleshooting purposes. There are no user serviceable parts.
- Do not use any accessories, attachments, or equipment not designed specifically for the bt-micro fusion PRO as to avoid interference with the unit's intended performance.



WARNING:

Use of this equipment adjacent to or stacked with other equipment should be avoided because it could result in improper operation.

Operation in close proximity (e.g., 1m) to shortwave or microwave therapy equipment may produce instability in device output.

WARNING:

Use of accessories other than those specified or provided by the manufacturer of this equipment could result in increased electromagnetic emissions or decreased electromagnetic immunity of this equipment and result in improper operation.

The EMISSIONS characteristics of this equipment make it suitable for use in industrial areas and hospitals (CISPR 11 class A).

- The charger base transmitting frequency is between 50/60 Hz with efficiency around 73%.

EMC GUIDANCE

Warning: Don't use near active HF surgical equipment and the RF shielded room of an ME system for magnetic resonance imaging, where the intensity of EM disturbances is high.

Warning: Use of this equipment adjacent to or stacked with other equipment should be avoided because it could result in improper operation. If such use is necessary, this equipment and the other equipment should be observed to verify that they are operating normally.

Warning: Use of accessories, transducers, and cables other than those specified or provided by the manufacturer of this equipment could result in increased electromagnetic emissions or decreased electromagnetic immunity of this equipment and result in improper operation.

Warning: Portable RF communications equipment (including peripherals such as antenna cables and external antennas) should be used no closer than 12 in (30 cm) to any part of the equipment, including cables specified by the manufacturer. Otherwise, degradation of the performance of this equipment could result.

Guidance and Manufacturer's Declaration – Electromagnetic Emissions	
Emissions test	Compliance
RF emissions CISPR 11	Group 1
RF emissions CISPR 11	Class B
Harmonic emissions IEC 61000-3-2	Not applicable
Voltage fluctuations/ flicker emissions IEC 61000-3-3	Not applicable

DISPOSAL



Equipment Disposal: Contact your local waste disposal organization for instructions on proper disposal of electronic parts.

ENVIRONMENTAL CONDITIONS

Operating Conditions: Temperature: +5 to 38°C

Relative Humidity: 5% - 90% R.H.
Atmospheric Pressure: 86kpa to 106kpa

Storage Conditions:

Temperature: -20 to 70°C

Relative Humidity: 5% - 90%R.H.

Atmospheric Pressure: 58.9kpa
to 106kpa

The time required for the bt-micro fusion PRO to warm from minimal storage temperature between uses until the unit is ready for its intended use when the ambient air is 20°C is 15 minutes. The time required for the bt-micro fusion PRO to cool from the maximum storage temperature between uses until the unit is ready for its intended use when the ambient air is 20°C is 15 minutes.

Notice: The maximum temperature the applicator can reach during operation is 46.4 C /115.52 Fahrenheit.

DEFINITIONS OF SYMBOLS



Serial Number

IPX35 Water Resistant, Solid Particle Protection > 2.55mm



EU Declaration of Conformity



Caution



Contact your local waste disposal organization for instructions on proper disposal of the device and or wires once they have reached their lifetime.



Refer to instruction manual / booklet



Manufacturer's trade name and address



Authorized Representative in the European Community



Type BF applied part

WARRANTY

Bio-Therapeutic / Micro Current Technology, Inc. guarantees the bt-micro fusion PRO for 1 year after the date of purchase. Defects due to faulty materials and workmanship will be repaired or replaced by Bio-Therapeutic / Micro Current Technology, Inc. provided that convincing proof of purchase in the qualifying period is provided. Bio-Therapeutic / Micro Current Technology, Inc. does not guarantee the bt-micro fusion of water/liquid damage, normal wear and tear including chips, scratches, abrasions, discoloration, fading, or damage determined by Bio-Therapeutic / Micro Current Technology, Inc. as misuse, abuse, neglect, alterations, or unauthorized repair.



Bio-Therapeutic

TECHNOLOGY ACCELERATED SKIN CARE®



bt-micro

Models and items shown are not available in all countries. The bt-micro fusion PRO does not penetrate the living layers of the skin, and is not intended in the diagnosis of disease or other conditions, or in the cure, mitigation, treatment, or prevention of disease, and is not intended to affect the structure of the human body.

